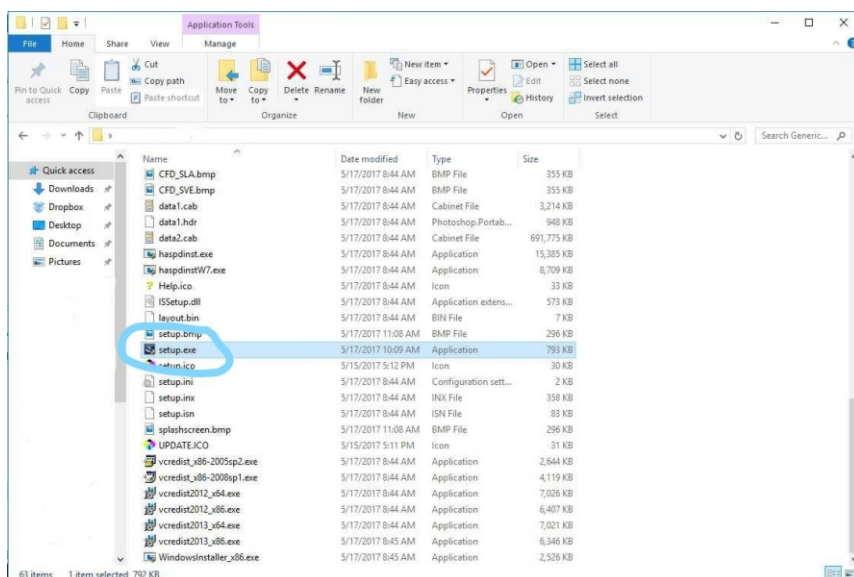


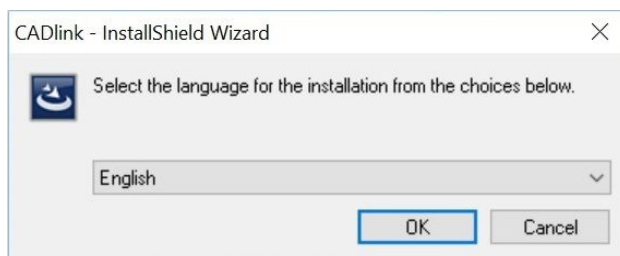
This document covers the Installation of the PrintPerfect 600S Driver on your PC. Before you begin, ensure that you have the USB dongle supplied with the Reveal PrintPerfect 600T System. The dongle is necessary for installation as well as for normal usage of the PrintPerfect 600S Driver. The driver will not work without the dongle inserted into a USB port.

Installation Procedure:

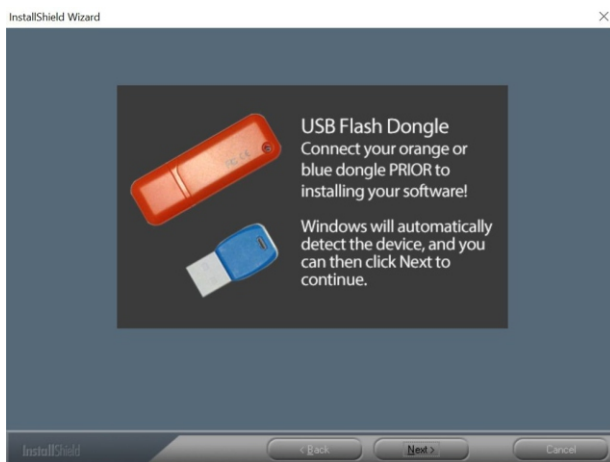
1. The Reveal PrintPerfect 600T Print Driver dongle contains the print driver, as well as the license files needed to unlock the software.
2. Insert the dongle into an open USB port, and use the File Explorer to display the root directory of the dongle.
3. Locate the Setup.exe file, and double click to initiate the installation.



4. Select the desired Language, and choose **OK**.



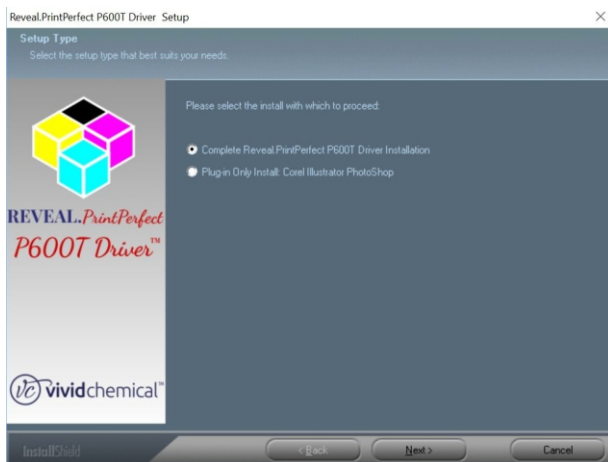
5. The software installer will ask for the insertion of the USB dongle. Click **Next**.



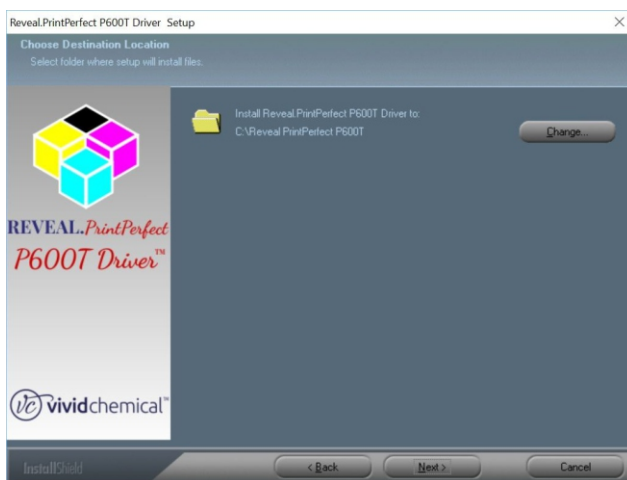
6. Next, the License Agreement will need to be accepted to proceed. Select *I accept the terms of the license agreement*, and click **Next**.



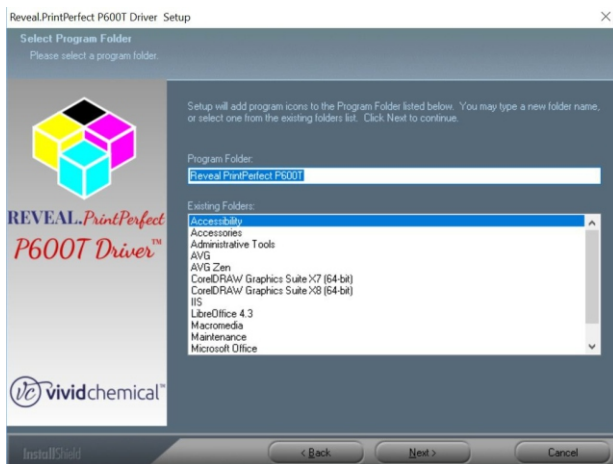
7. Select Complete Installation and proceed by pressing **Next**.



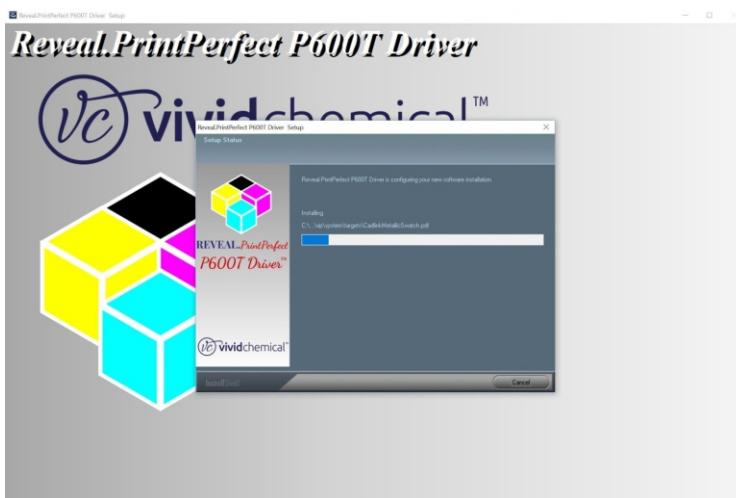
8. The software installer will choose a default location, which can be changed if desired. Change if necessary, if not, select **Next**.



9. The folder name will be verified; you can change the name if desired. **Next.**




10. Reveal PrintPerfect will be installed. Allow 2-3 minutes for full installation.

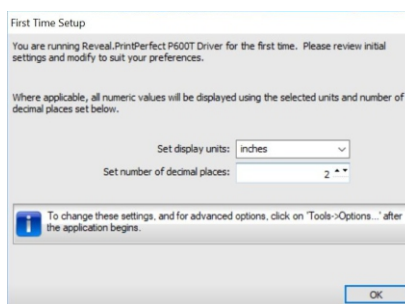


11. Restart your PC.

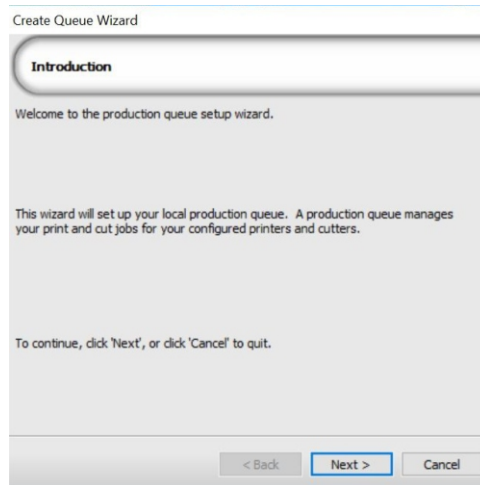


12. Launch the Reveal PrintPerfect Driver by clicking the icon  **Reveal.PrintPerfect P600S Driver**. The Reveal PrintPerfect 600T folder can be found in the Windows start menu.

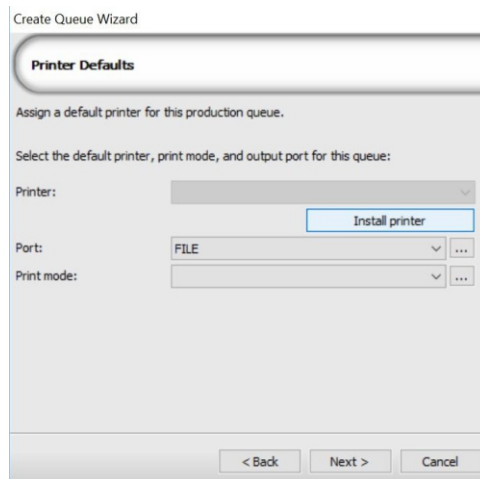
13. The driver will notify the user that it is the first time running the software package, so a few initial settings will need to be modified. Click **OK**.



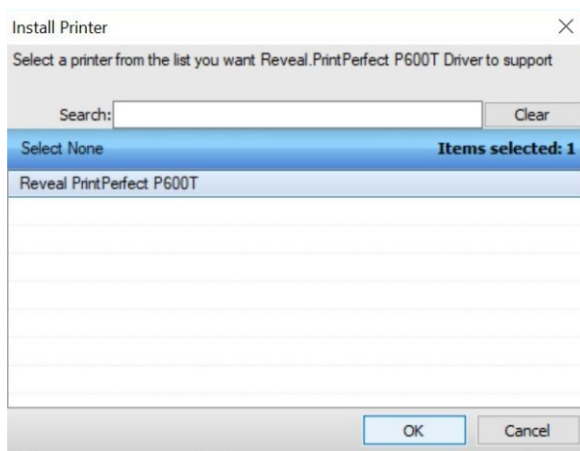
14. The production queue setup screen comes first; select **Next**.



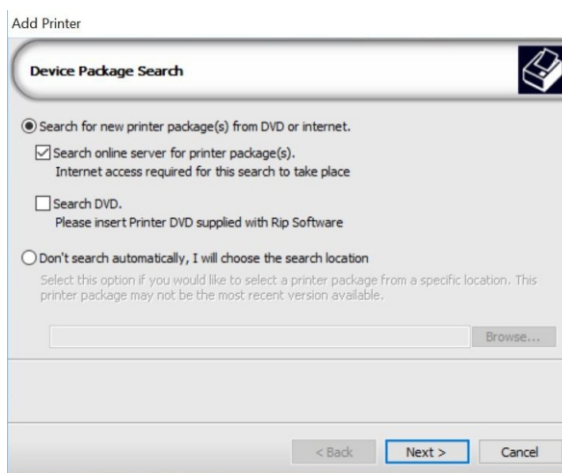
15. The printer will need to be installed into the driver package; click **Install Printer**.



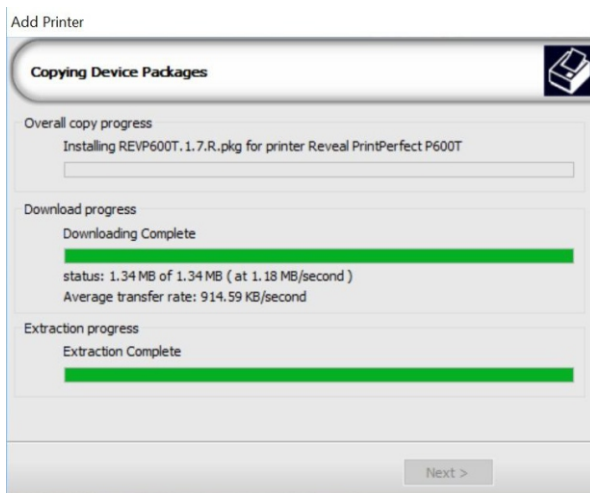
16. Select the Reveal PrintPerfect 600T from the printer availability list. Proceed by selecting **OK**.



17. Select Search for new printer package from internet, and click **Next**.



18. The driver will be installed from the internet. Click **Next**.



19. Congratulations! You have completed the installation. Reveal PrintPerfect 600T will automatically launch after installation. The USB dongle will be required at all times to operate the Reveal PrintPerfect Driver.

