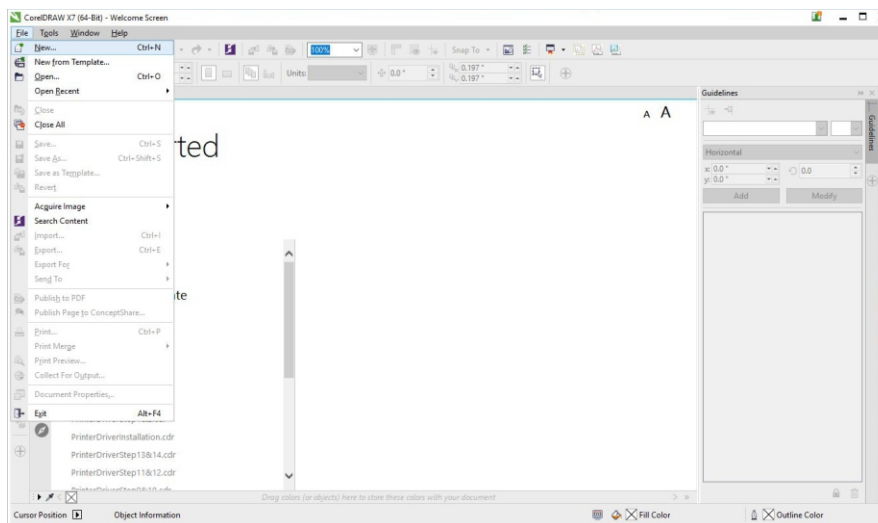


vividchemical™ **PrintPerfect 600T Graphic File Creation**

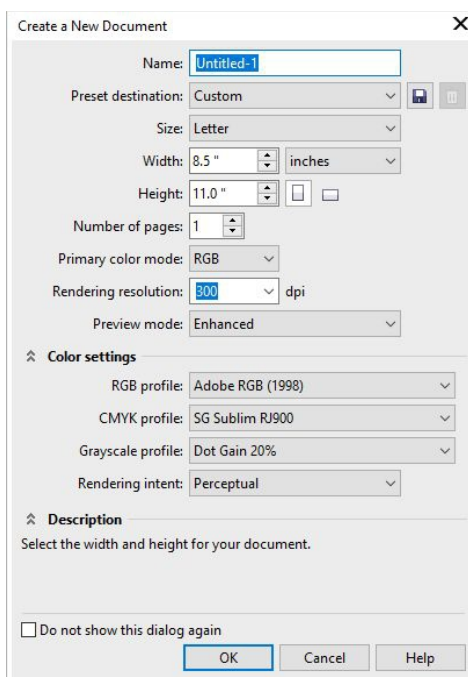
This document covers the steps to create graphics for decorating Textile Fabrics using the PrintPerfect 600S platform. These steps are demonstrated using CorelDRAW, but the same tasks can be performed using other software packages such as Adobe Photoshop.

Artwork Creation Procedure:

1. Open CorelDraw; Select **NEW** from the **FILE** menu.

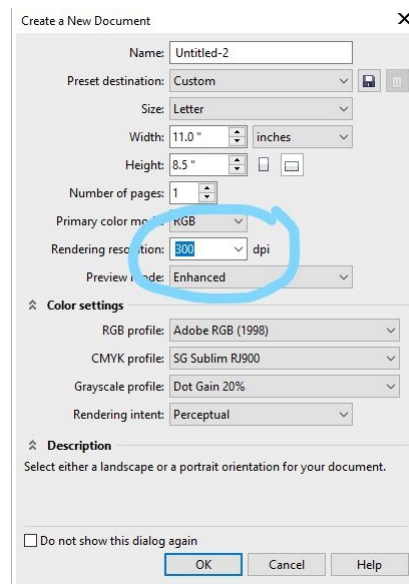
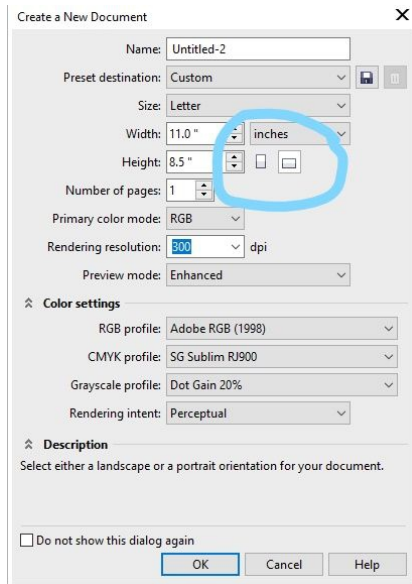


2. The New Document properties will be displayed. The width and height of the canvas can be adjusted in this section before creating the image.

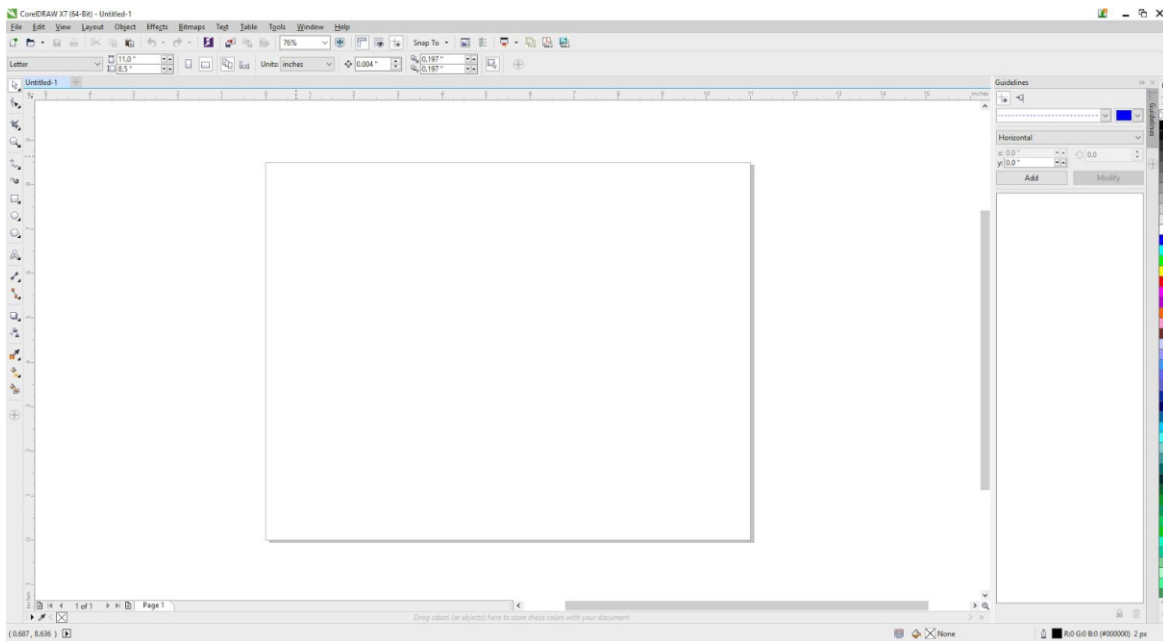


vividchemical™ **PrintPerfect 600T Graphic File Creation**

3. In the same window, select either Landscape or Portrait orientation, depending on the desired outcome. Also, select **300 dpi** for high resolution images. Click **OK**.

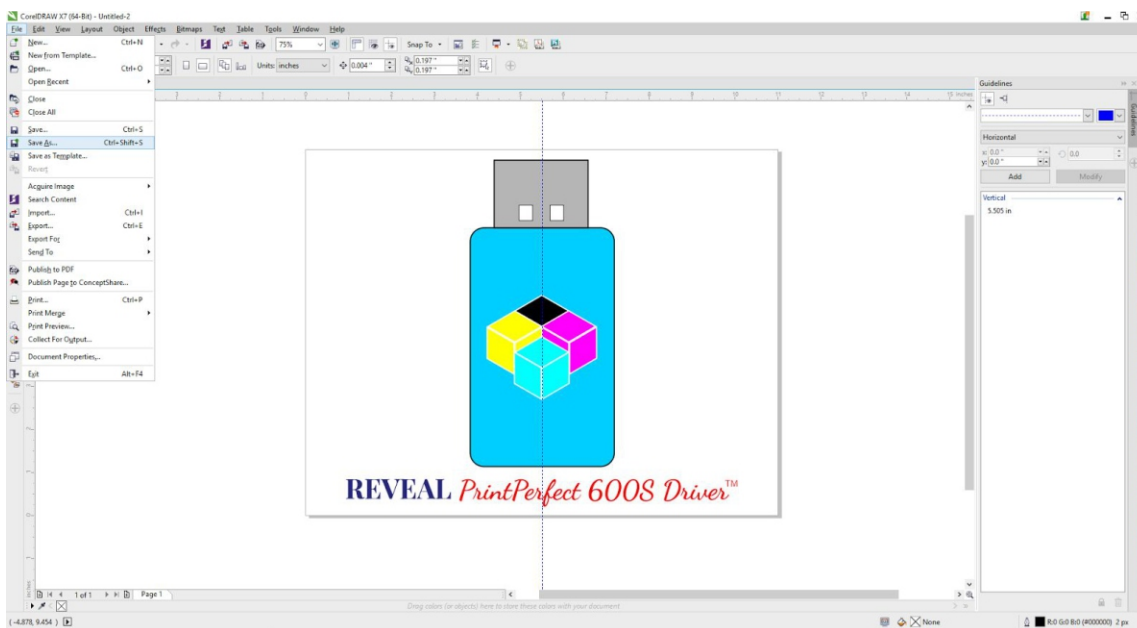


4. The Canvas has been created, so it is time to create wonderful graphics for Reveal branded products.

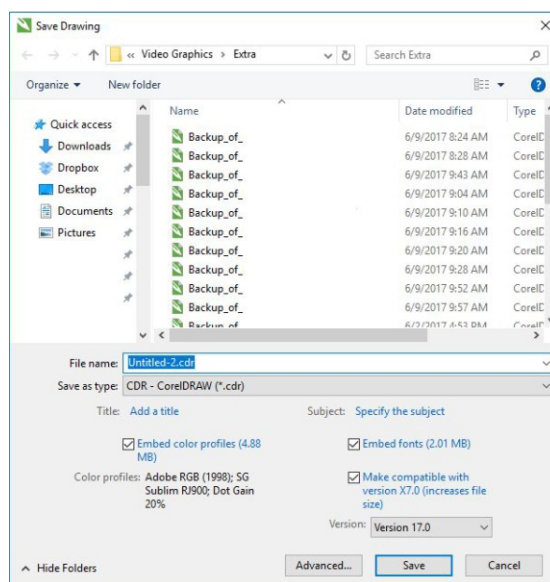


vividchemical™ **PrintPerfect 600T Graphic File Creation**

5. Create artwork that fits in the boundaries of the canvas. The dimensions of the canvas will set the size of the final image. When the artwork is complete, click **SAVE AS** in the **FILE** menu. This will save your artwork as a CDR (CorelDRAW) file. This will allow future changes to be made to this file in CorelDRAW easily without starting from scratch.



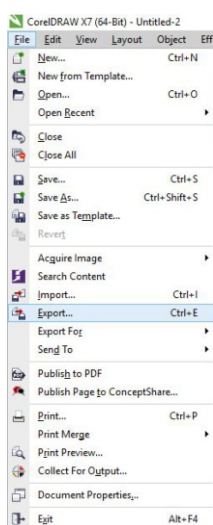
6. The *Save As dialog* window allows the user to assign a name and location for the file.



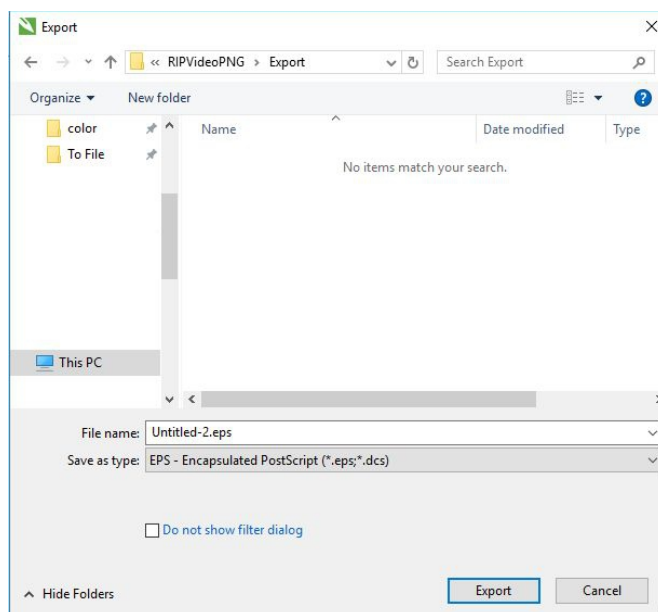
7. Your graphic file needs to be exported into a format that is compatible with the Reveal PrintPerfect Driver. The PrintPerfect Driver can accept the following file formats:

AI, BMP, EPS, GIF, JPG, PDF, PNG, PSD, PS and TIFF. Condé Systems recommends using a **PNG with a Transparent Background**.

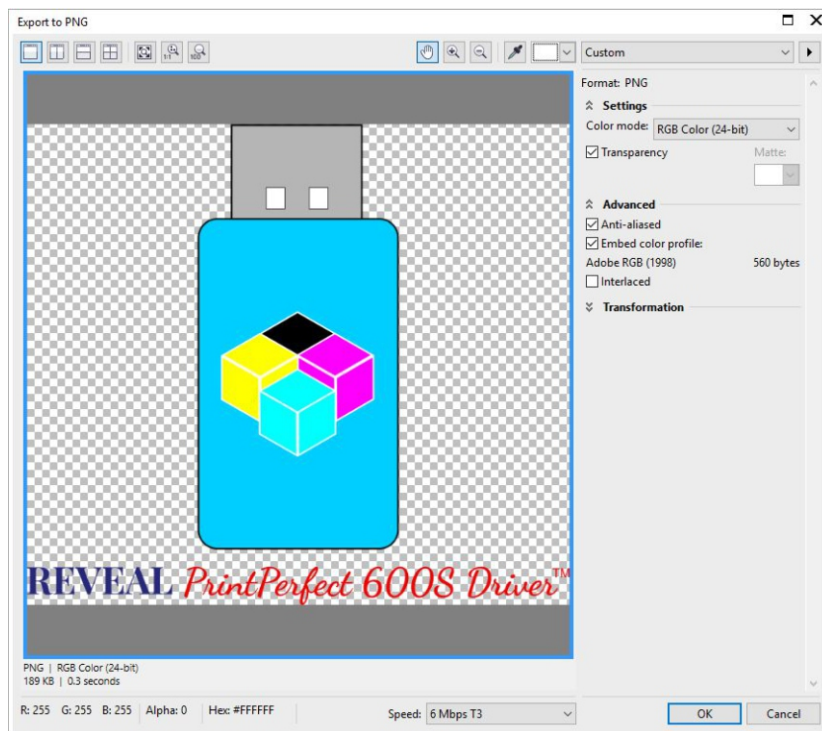
Select the **EXPORT** command under the **FILE** menu.



8. The *Export* dialog window allows the user to assign a name and location for the file. Click **EXPORT**.



9. A final image properties window will be displayed before exporting the file. In this window, the Transparency box will need to be ticked to remove the background. In CorelDRAW, the background will be transparent by default, so you will need to fill the background with a color, if desired. Click **OK**.



10. Congratulations! Your artwork is ready for the Reveal PrintPerfect Driver!