

Instruction Booklet

for Ricoh and Sawgrass Sublimation Printers



Reveal-S™ Sublimation Transfer Media for Cotton

A self-weeding sublimation transfer film that allows sublimators to decorate light colored cotton or blended fabrics using any ink jet sublimation printer.

WHY USE REVEAL?



FREE OF:
Formaldehyde
NMP
APEO
Phthalates

QUALITY & SPEED
● High Quality Digital Images
● It's Fast... Really Fast!
● Self Weeding

COST
● No Capital Expenditures
SMARTCOATING TECHNOLOGY
● Print & Press
● Soft & Durable Images
● No Polymer Window



CONDÉ®

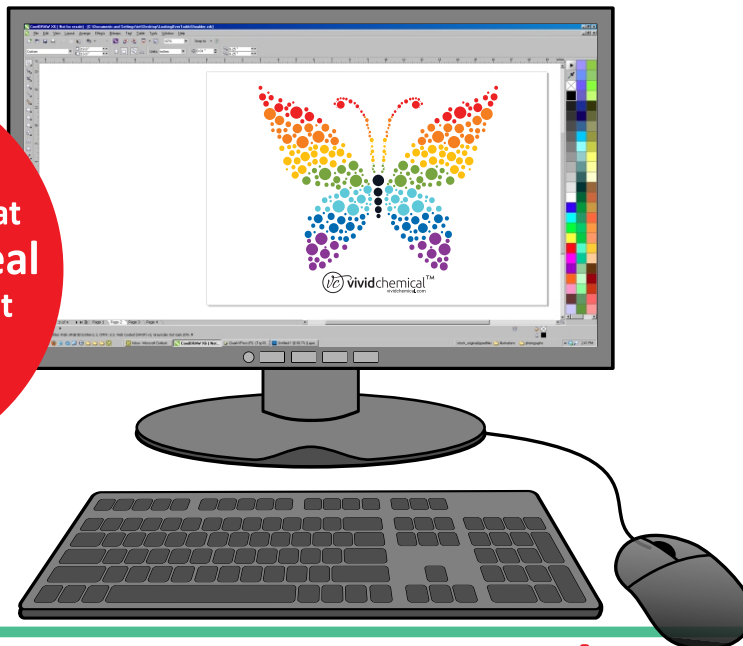


800-826-6332



www.conde.com

Continue to
check back with us at
conde.com/reveal
for the most current
instructions and
updates



IMPORTANT INFORMATION!

For best results, Condé Systems recommends using our Reveal-S printer settings. These settings are different from normal dye-sub settings & help to optimize the Reveal-S film.

Epson printers should continue to use current printer settings.

Wide Format Printers should visit <http://www.vividchemical.com/how-to.html>

- 1** Go to the Reveal-S Film “landing page”: www.conde.com/reveal
- 2** Download our latest Reveal-S instructions.
- 3** Click on the “Reveal-S Installer” for your particular ink jet sublimation printer.
For *Windows Operating Systems*, installers are available for the following:
 - Ricoh SG3110 • Sawgrass Virtuoso SG400
 - Ricoh SG7100 • Sawgrass Virtuoso SG800*} Call if your printer isn't listed!*
For *MAC Operating Systems*, contact Condé's Technical Support for assistance.
- 4** Run the installer and follow all prompts until installation is complete.
- 5** Select the “Conde Reveal-S” Profile in your graphic software program before printing to the Reveal-S film.



Reveal-S Acceptable Artwork:

Reveal-S film is for clip art, line art, and vector art designs ONLY. Design your graphics to use only bold colors. Light to medium colors will not activate the smart polymer coating on the film. Reveal-S should not be used for photographic reproductions. It will be helpful to print and transfer our Reveal-S Basic RGB or Reveal-S Full RGB color charts to aid in the selection of colors. Download the charts at www.conde.com/reveal.

Reveal-S Printing:

Before loading the Reveal-S film into your printer's paper tray, first place two sheets of plain paper (that matches the Reveal-S film size) into the paper tray.



Ink-Jet Sublimation Only



Mirror Image

Load the Reveal-S film on top of the two sheets of plain paper so that you print on the matte/rough side of the film. For Ricoh and Virtuoso printers, place the film with the matte/rough side (print side) face down in the bottom tray. If using the bypass tray, place film matte/rough (print side) face up.

Print in MIRROR IMAGE with sublimation ink. For best results, we recommend using our Reveal printer settings. These settings are different from normal sublimation settings and help to optimize the Reveal film. To receive those printer settings, visit www.conde.com/reveal or call 800-826-6332 (press "2" for tech support).

Remove the film from the printer's output tray as quickly as possible, as some sublimation inks dry slowly. If the ink is wet, avoid multiple sheets piling up in the printer's output tray. Handle the film carefully to prevent wet ink from smearing. For best results, Reveal-S should be applied to a garment within 4 hours of printing.

Step 3: Heat Press Setup Single-Sided Decoration

- **Set your heat press:**

Temperature: 385 degrees F

Dwell Time: 18 seconds

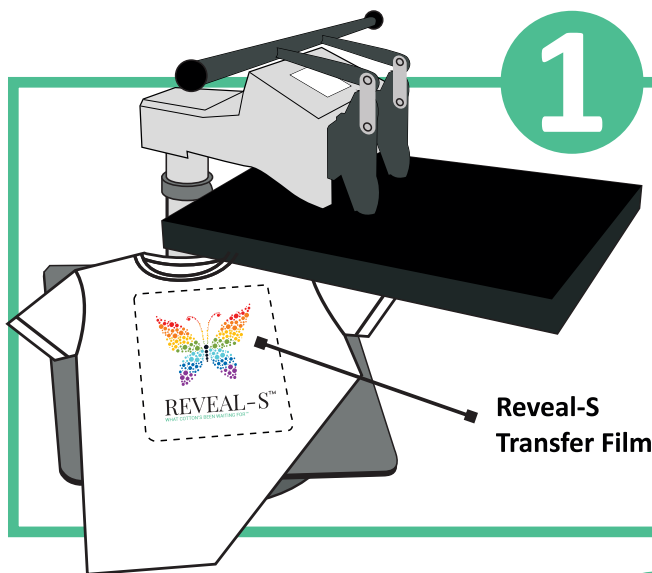
Pressure: Heavy

- **Place the shirt in your press and use a lint roller over the area to be decorated** (You may decorate a 100% cotton or cotton-poly blend, white or light colored shirt. See www.conde.com/reveal for examples of light colored shirts).

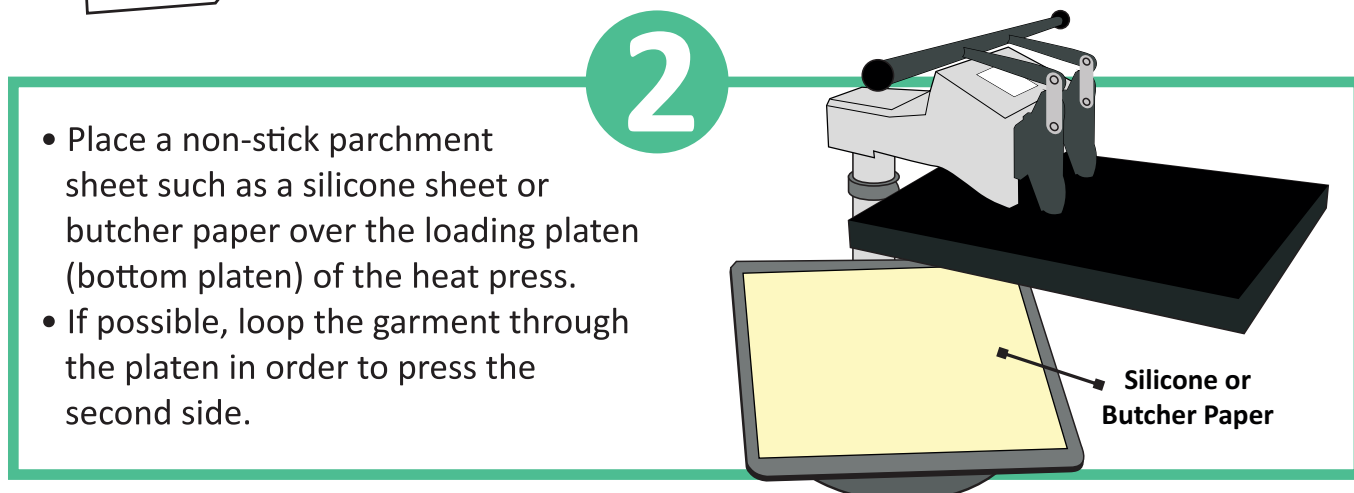


- **Pre-press the shirt without locking the press closed.**
Just use the weight of the platen. If relative humidity is less than 40%, prepress for 1-2 seconds. If greater than 40%, prepress 4-5 seconds.
- **Place the Reveal-S film with the print side face down on the shirt in the desired orientation and position** (Because the film is clear, you can see your image to aid in positioning. Also double check that your design now appears “right reading” indicating the print side is indeed against the shirt). For best results, try to keep the Reveal-S film at the center of your heat press platen.
- **Without using a cover sheet,** close and lock the press with heavy pressure at 385 degrees F for 18 seconds.
- **Hot peel the film by pulling the film parallel with the fabric.** Allow garment to “cure” for 24 hours before washing.
- Verify proper release of the decorated sections of the smart polymer. If some parts did not transfer, look to see if these sections were designed with bold colors. It may be necessary to replace colors that are not bold enough. For help with color selection, download our bold color charts at www.conde.com/reveal.
- For additional trouble shooting, visit www.conde.com/reveal, call 800-826-6332 (press “2” for tech support), or email support@conde.com.

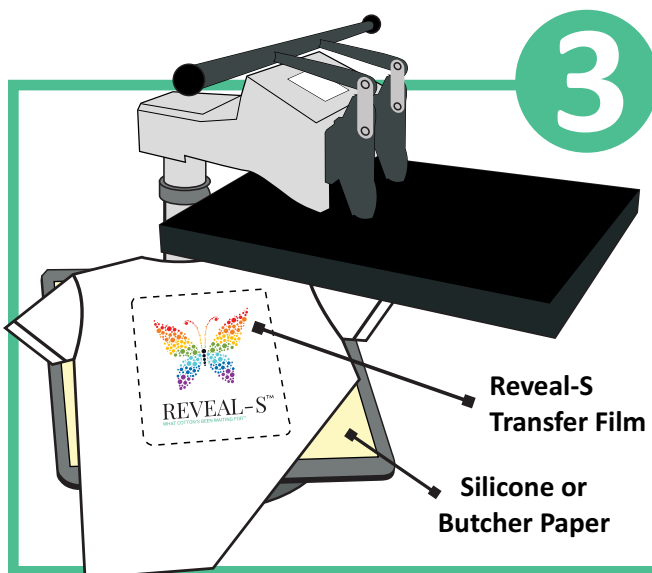
Step 3: Heat Press Setup Multi-Sided Decoration



- Place the first or “front” Reveal-S transfer on the garment.
- Press the transfer at **385°F for 18 seconds w/heavy pressure.**
- Lift the press platen and hot peel the Reveal-S film sheet.
- Allow the garment to completely cool before attempting second transfer.



- Place a non-stick parchment sheet such as a silicone sheet or butcher paper over the loading platen (bottom platen) of the heat press.
- If possible, loop the garment through the platen in order to press the second side.



- Place the second or “back” Reveal-S transfer on the garment.
- Press the transfer at **385°F for 18 seconds w/heavy pressure.**
- Lift the press platen and hot peel the Reveal-S film sheet.

REVEAL-S™
We've Got Cotton Covered™



CONDÉ®



800-826-6332



www.conde.com

- 1) After printing, allow printed garment to sit for a minimum of 24 hours before washing or wearing.
- 2) If the garment is to be worn immediately, wash and dry your garment first.
- 3) Make sure to turn your garment “inside out” before washing to minimize abrasion within the washing machine.
- 4) Use a mild, color-safe detergent in the wash cycle. Allow your detergent to dilute before placing your garment in the washing machine.
- 5) Do not use bleach, non-bleach alternatives, or pre-wash treatments in the wash cycle with garments decorated by Reveal-S.
- 6) Do not use liquid fabric softener in the wash cycle.
- 7) Wash garment on “Cold” or “Warm” water setting with “Delicate” or “Normal” wash cycle selected. Always wash garments decorated by Reveal-S with other garments in the wash tub - don't wash the garment by itself.
- 8) Do not set the wash temperature above 105°F / 40°C.
- 9) Promptly remove garment from wash once cycle is complete and dry garment.
- 10) Tumble dry on “Low Heat” or “Air Dry”.
- 11) Fabric Sheets can be used in the Dryer with your garment.
- 12) Do not iron over the imaged area of the garment.
- 13) Do not “Dry Clean” decorated garments.



105°F / 40°C



Mild
Detergent



NO Bleach
NO Non-Bleach Alternatives
NO Pre-Wash Treatments



Do Not
Iron

