

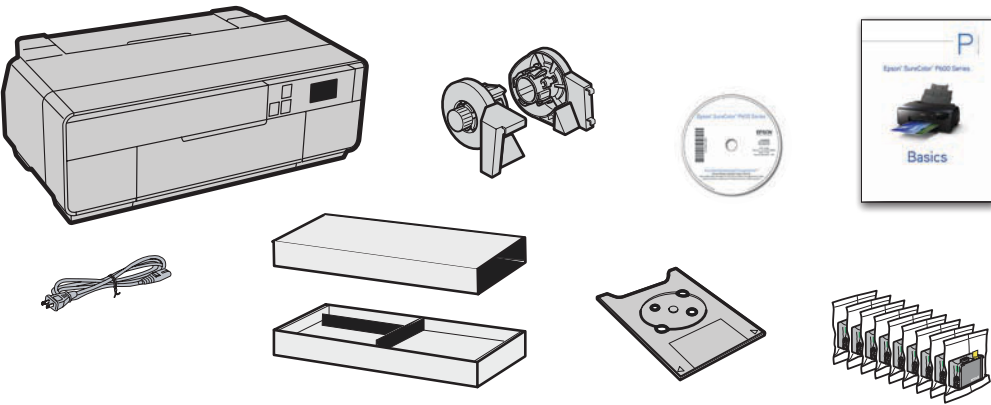
Epson® SureColor® P600 Series

Start Here

Read these instructions before using your product.

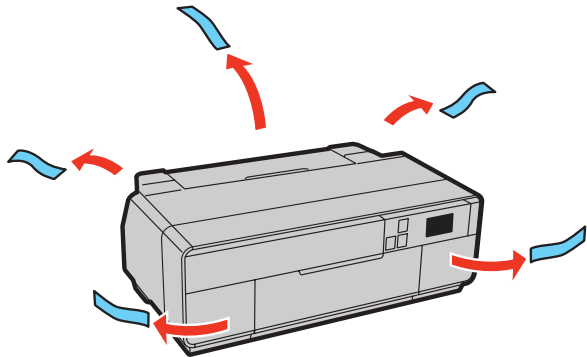
Unpack

- 1 Make sure you have these items:

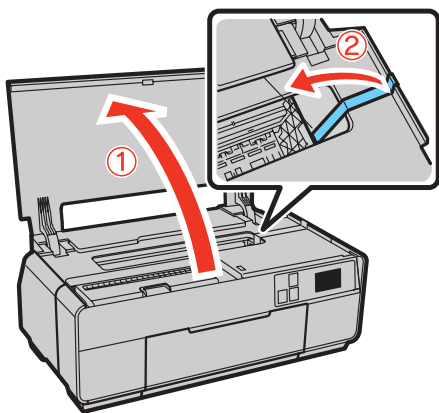


Note: Do not open ink cartridge packages until you are ready to install the ink. Cartridges are vacuum packed to maintain reliability.

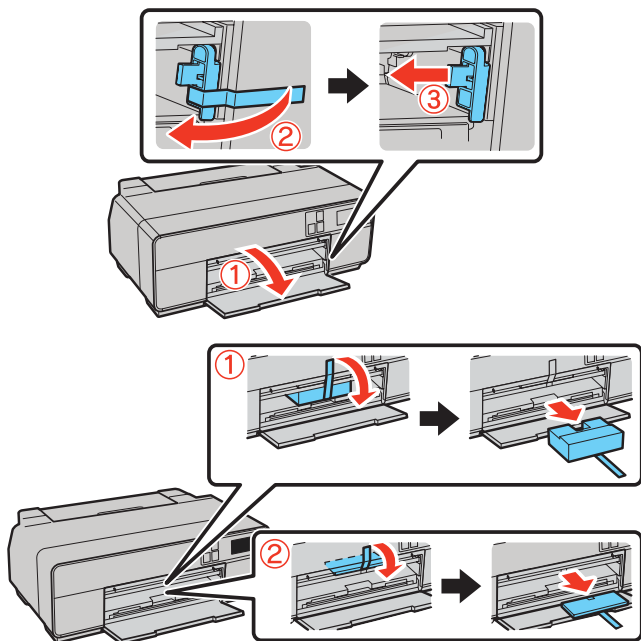
- 2 Remove all the packaging materials and tape.



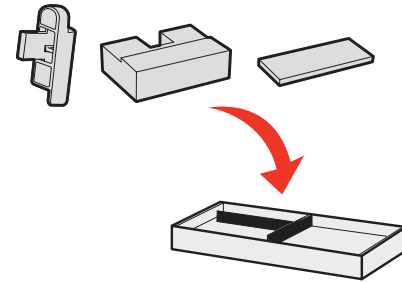
- 3 Open the top cover and remove any tape inside.



- 4 Open the front cover and remove the transportation locks.

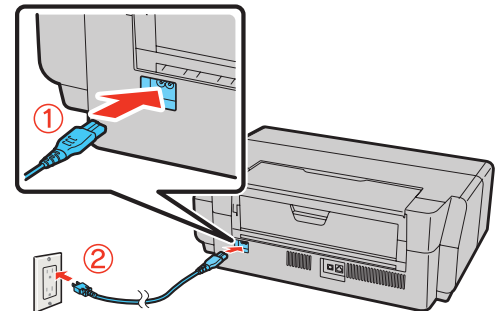


Tip: Keep the transportation locks in the accessories box. You can also use the accessories box to store your printer manual and spare ink cartridges.



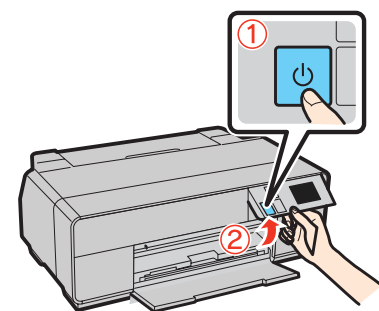
Turn on and configure

- 1 Connect the power cable.



Caution: Do not connect to your computer yet.

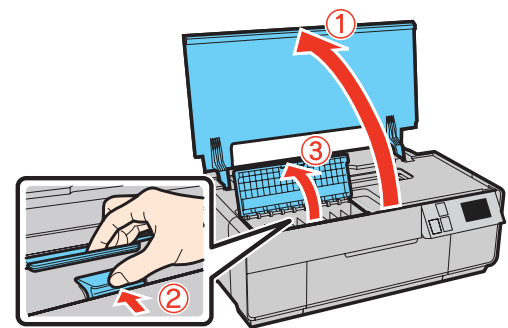
- 2 Press the power button and adjust the control panel.



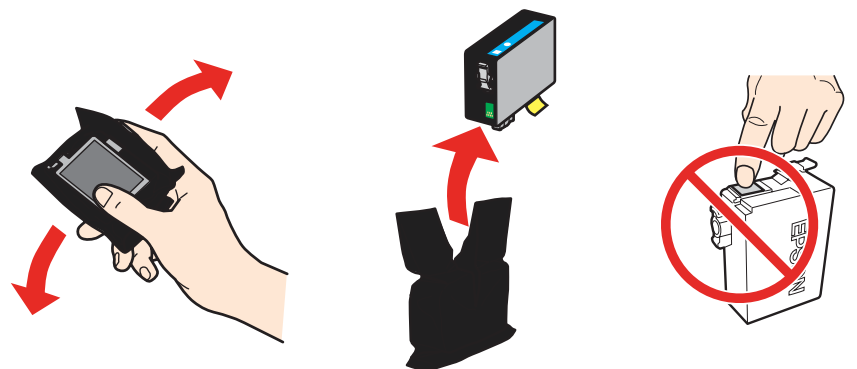
- 3 Select your language.

Install ink cartridges

- 1 Open the printer cover, then open the ink cartridge cover.



- 2 Shake the ink cartridges gently 4 or 5 times, then unpack them.



Epson® SureColor® P600 Series

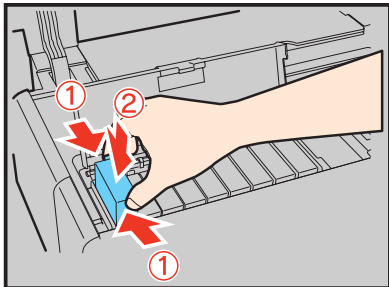
3 Remove only the yellow tape from each cartridge.



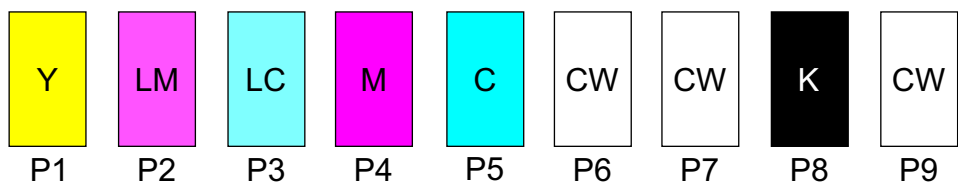
Caution: Dont remove any other seals or the cartridges may leak.



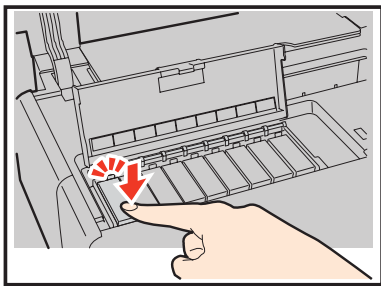
4 Insert the cartridges in the holder for each color.



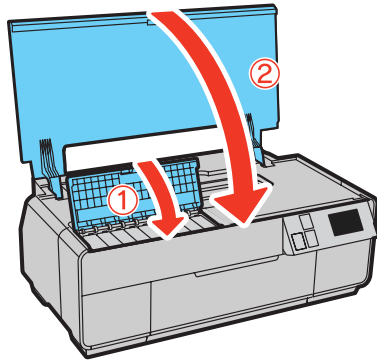
Reveal PrintPerfect 600T Cartridge Configuration



5 Press the cartridges down until they click.



6 Close the cartridge cover, then close the printer cover.



7 The printer begins priming the ink delivery system. This takes about 10 minutes. Do not turn off the printer, load paper, or open any covers until the process is complete.

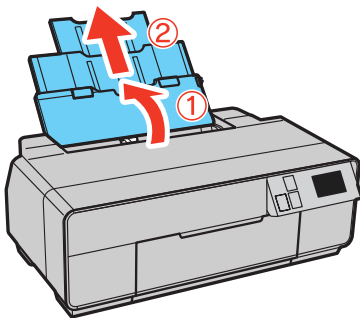
Caution: Dont turn off the printer while it is priming or youll waste ink.

Load paper

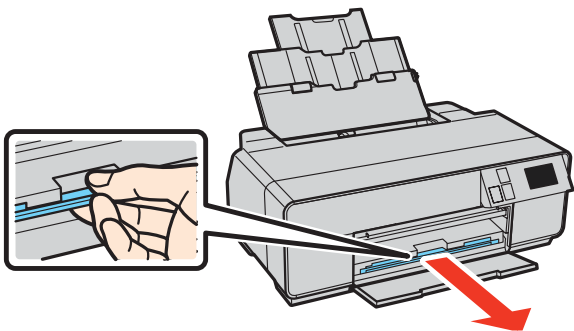
Sheet feeder

You can load plain paper, and most glossy and matte papers, in the sheet feeder.

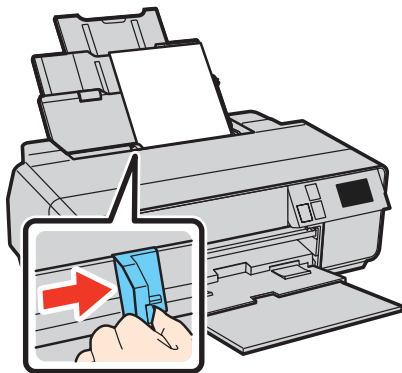
1 Open the paper support and pull up the extensions.



2 Open the front cover, then extend the output tray.



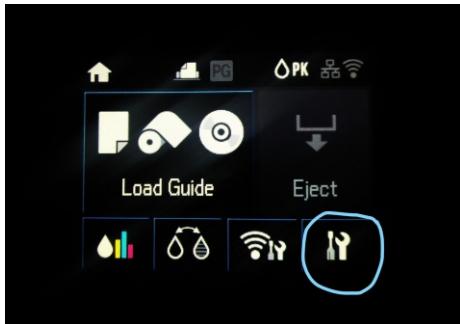
3 Load paper against the right edge and behind the tab. Then press the button on the edge guide and slide it to the edge of the paper.



Note: Dont load the paper sideways. Always load it short edge first.

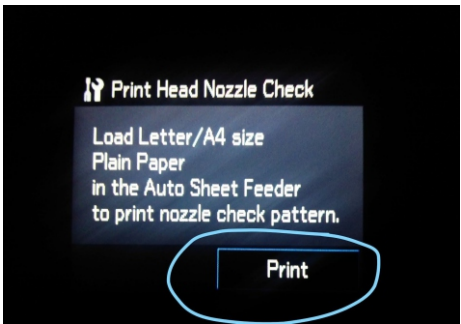


- Print Head Nozzle Check
 - On the Printer touchscreen, select the **Setup** icon



- Select **Maintenance** from the Setup menu

- Print the Nozzle Check



- Next, choose **Print Head Nozzle Check**

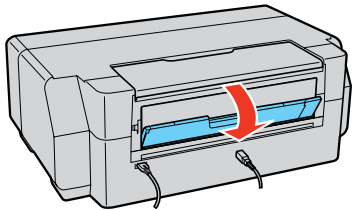
- Check for gaps in the print pattern. Please note that there will be two gaps in the nozzle pattern representing the Clear White ink.



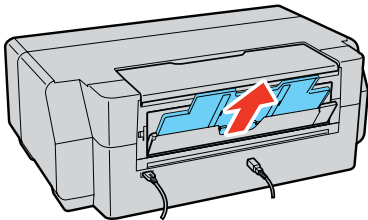
Epson® SureColor® P600 Series

1 Remove any paper from the sheet feeder.

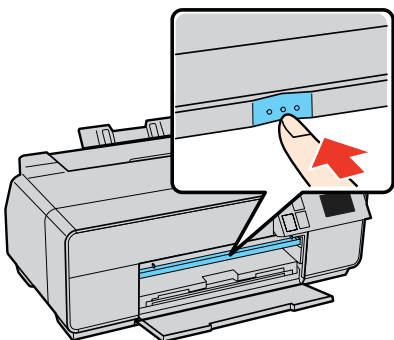
2 Open the rear support.



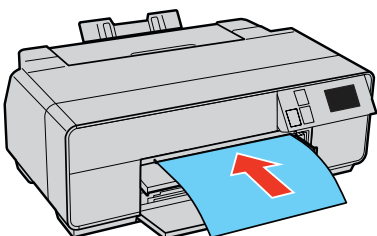
3 Fully extend the rear support.



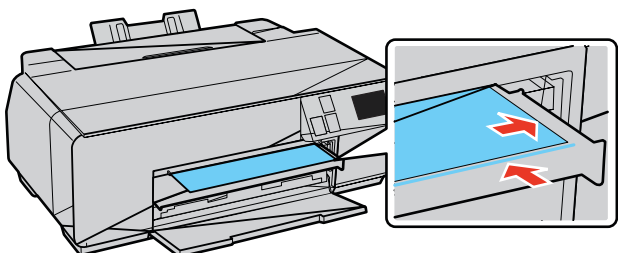
4 Open the front cover, then press the center of the manual feed tray to extend it.



5 Insert a single sheet of fine art media. Insert it short end first with the printable side faceup.

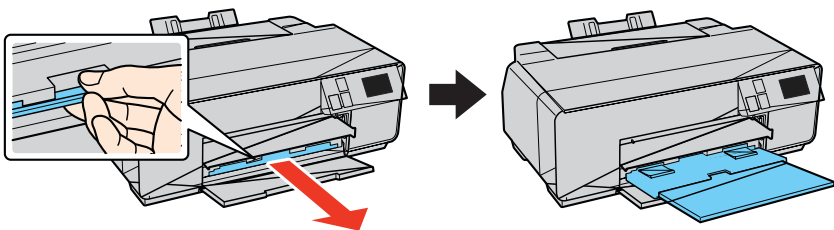


6 Feed the paper up to the line on the tray. Make sure the paper is flush against the right.



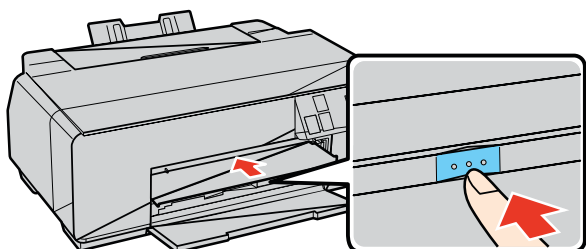
7 Press **Load** on the LCD screen. The paper loads inside the printer.

8 When you see the message to extend the output tray, extend the tray fully.



9 Select your **Paper Size** and **Paper Type** and press **OK**.

10 Push in the manual feed tray until it latches.



Install Software

Note: Condé Systems recommends contacting their Technical Support Department at **(800) 826-6332, ext. 687** for an overview of installing the Reveal PrintPerfect 600T Software RIP Driver.

- or -

Visit www.conde.com/reveal to download the following:

PrintPerfect 600T Driver Installation

This document is provided in PDF format to view or download.

Any problems?

Network setup was unsuccessful.

Make sure you select the right network name (SSID).

If you see a firewall alert message, click **Unblock** or **Allow** to let setup continue.

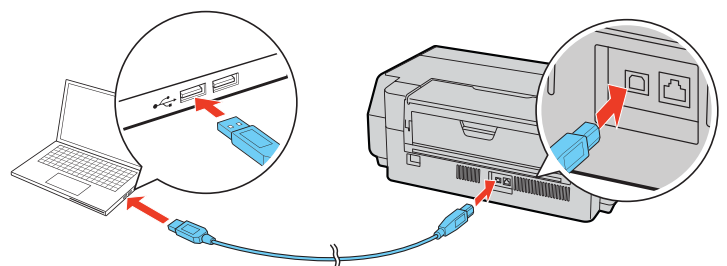
If your network has security enabled, make sure you enter your network password (WEP key or WPA passphrase) correctly. Passwords must be entered in the correct case.

The printers screen is dark.

Make sure your product is turned on and press any button or touch the screen to wake it from sleep mode.

Setup is unable to find my printer after connecting it with a USB cable.

Make sure it is securely connected as shown:



Any questions?

Basics

Visit www.conde.com/reveal for the latest updates and general information regarding the Reveal PrintPerfect 600T Cotton Decorating System.

Users Guide

Visit www.conde.com/reveal for the latest updates and tutorial video series on the Reveal PrintPerfect 600T Cotton Decorating System.

Technical support

Phone Support (USA and Canada)

Condé Systems, Inc.
(800) 826-6332, ext. 687

Web Support

Condé Systems, Inc.
<http://www.conde.com/reveal>

Vivid Chemical
<http://www.vividchemical.com>