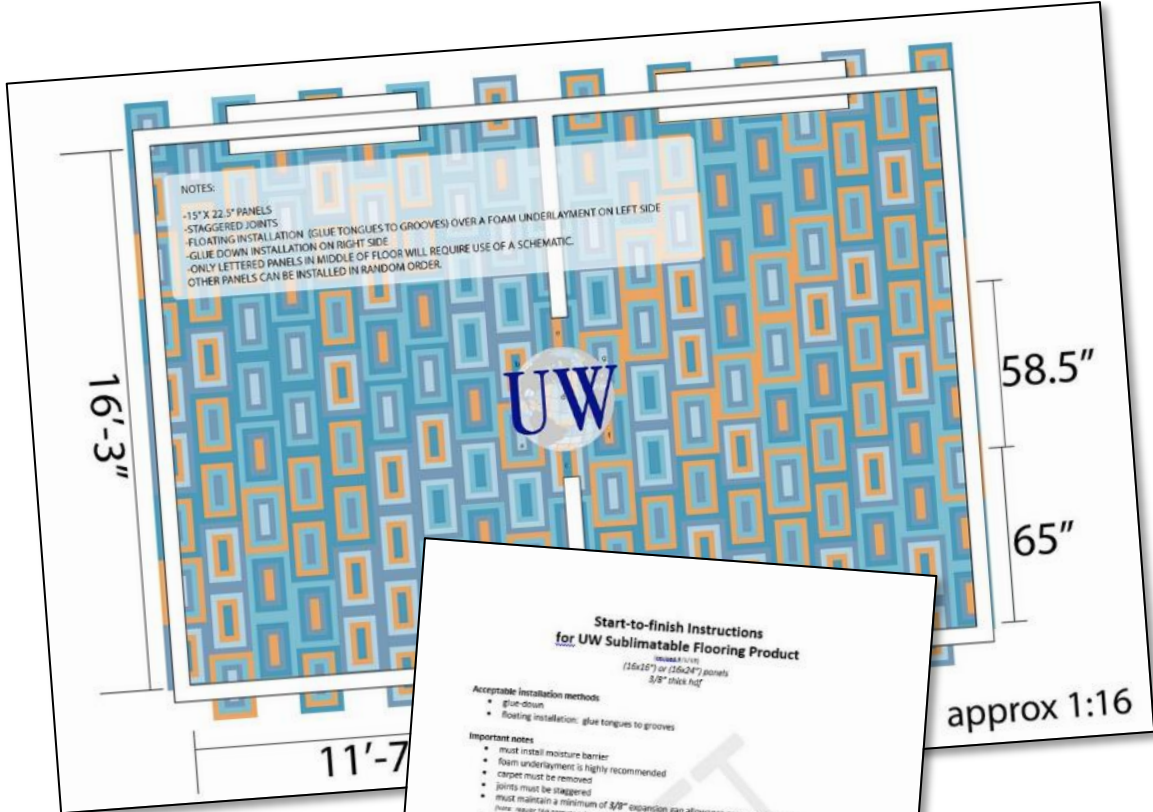


PANELS WERE SUBLIMATED BY UNIQUE IMAGING CONCEPTS



SCHEMATICS AND INSTRUCTIONS



Start-to-finish Instructions for UW Sublimatable Flooring Product

Model # 1116 (16x22.5") or (16x24") panels 3/8" thick hif

Acceptable installation methods

- glue-down
- floating installation: glue tongues to grooves

Important notes

- must install moisture barrier
- spin underlayment is highly recommended
- carpet must be removed
- joints must be staggered
- must maintain a minimum of 3/8" expansion gap allowance around floor perimeter
- must be installed in dry, climate-controlled area with humidity below 24%

Supplies needed for installation

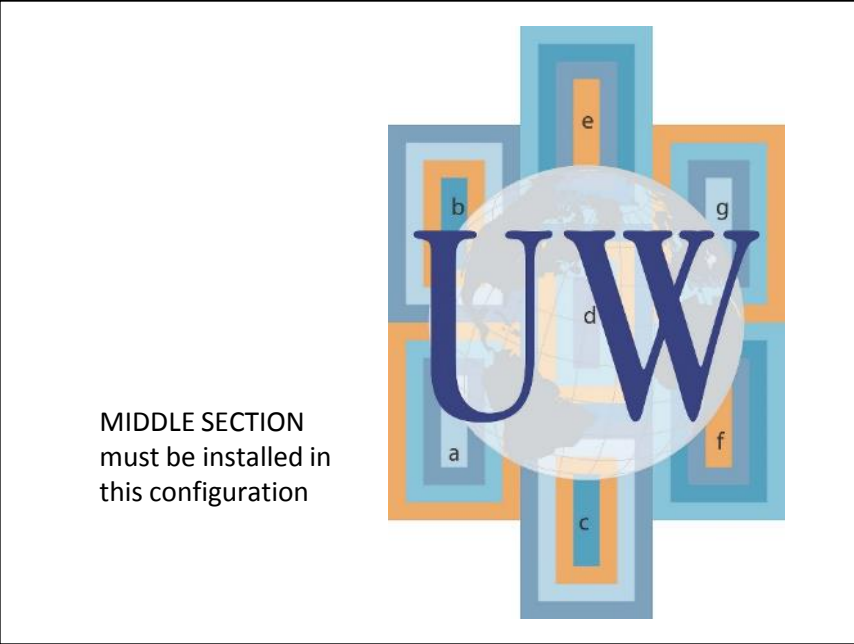
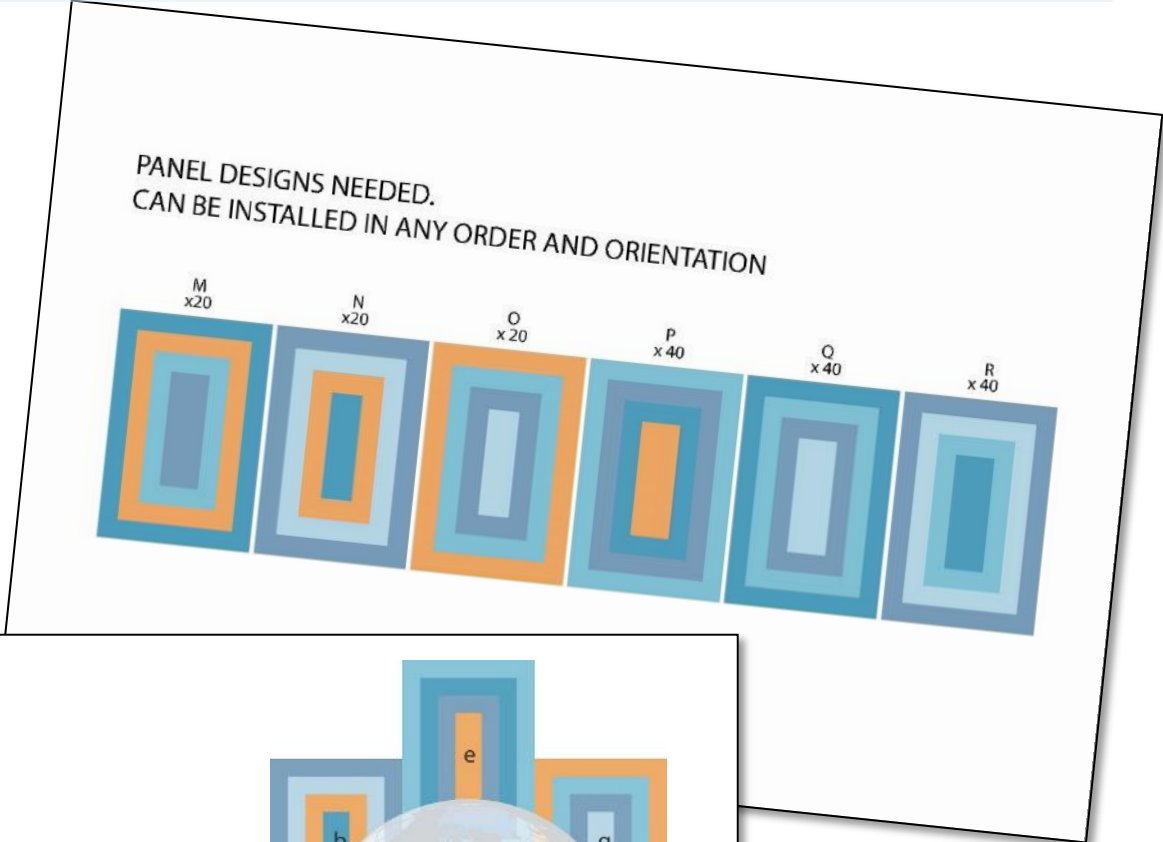
-Results of humidity test	-Floor panel design schematic	-Moisture barrier
-Flat, clean, dry installation site	-Sublimatable panels	-Topping block
-Moisture barrier	-Appropriate adhesive for your chosen installation method (e.g. Tongue-and-groove glue)	-Pull bar
-Foam underlayment		-Painter's tape
-Wedges for perimeter gap		-Double-sided tape
		-Transitions (optional)

Design preparation

- First, make sure our product is right for you: light-duty commercial spaces, like business lobbies, etc.
- Next, dream up a design for your floor. Discuss viability of idea with **graphic designer**, **computer/ designer?**
- Check out our **design gallery** for inspiration here: _____

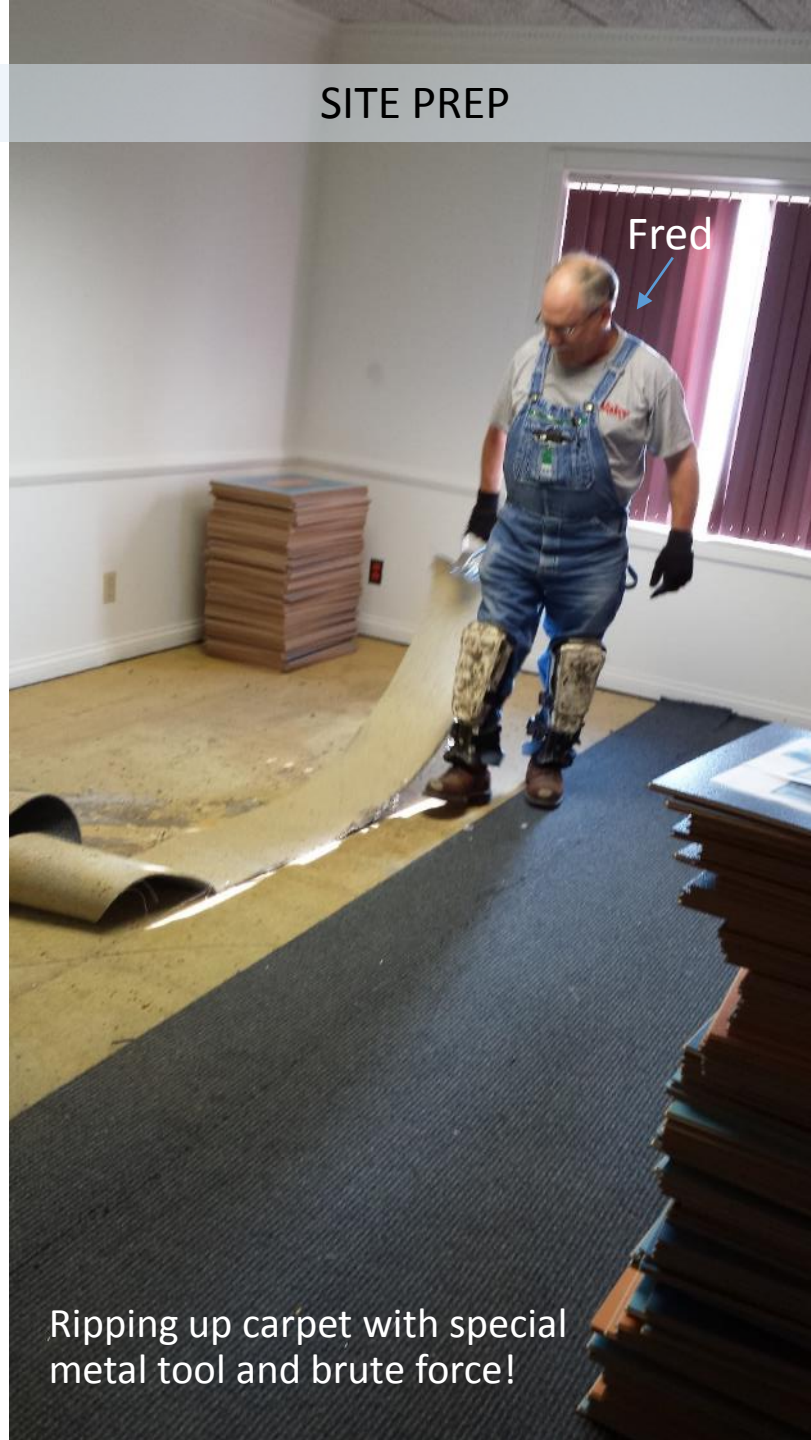
Site inspection and area preparation

- Assess humidity and flatness of installation area.
 - Humidity must be below 24% (e.g. Pergo)
 - Fill any holes.



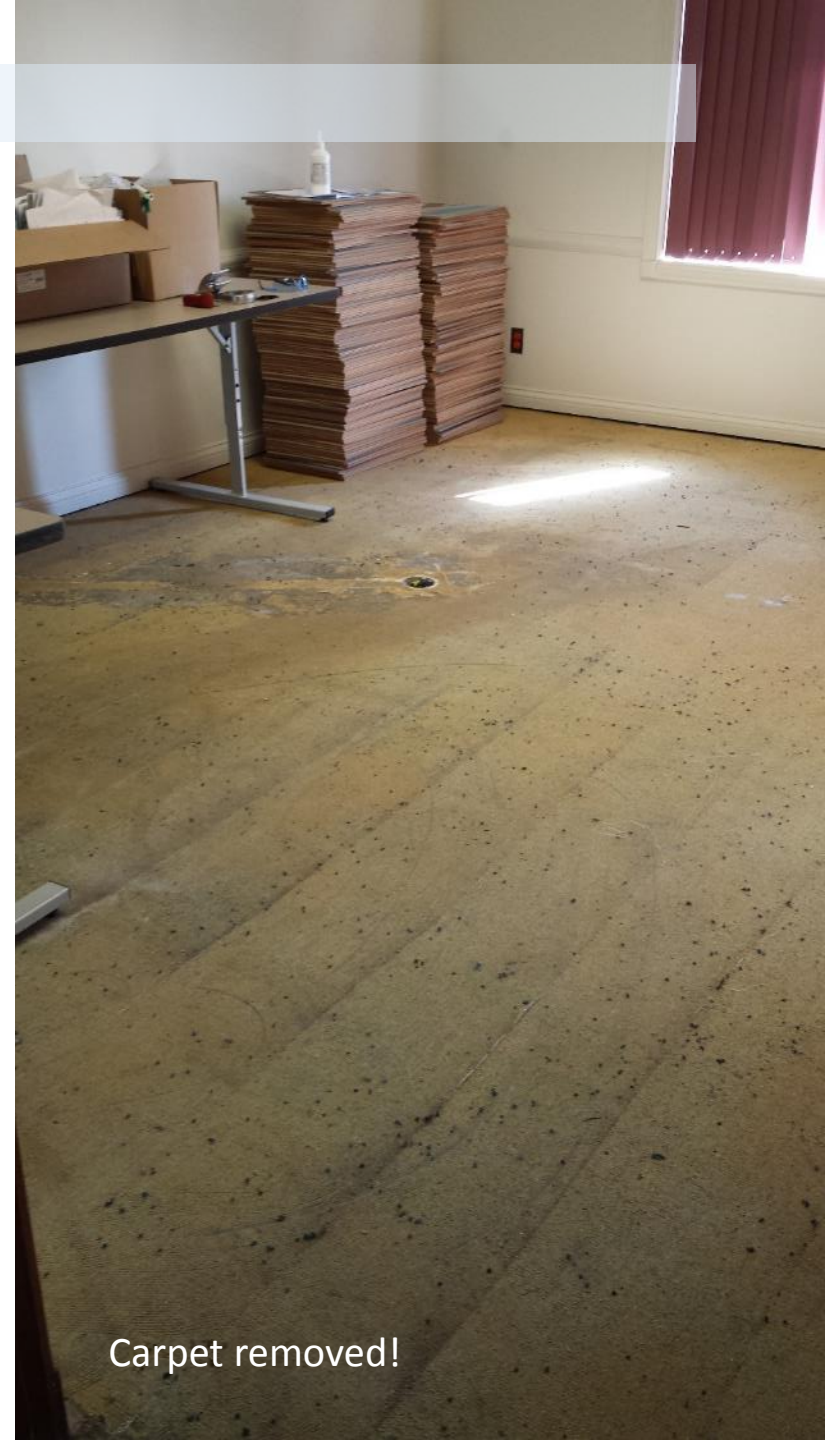


Materials acclimated and in place
DAY 1: 8 AM



SITE PREP

Ripping up carpet with special
metal tool and brute force!



Carpet removed!



Jay

Removing glue
DAY 1: 10 AM

SITE PREP



trowels

Scraper for removing glue

Knee pads

SITE PREP

Leveling
compound

Leveling the floor
DAY 1: 12 NOON



Glue-down Adhesive

TOOLS OF THE TRADE

Other tools not seen here:

- Jam saw
- Measuring tape

Wish list:

- Midpoint measuring jig



Portable table saw

Chop saw

Foam Underlayment

Additional tools

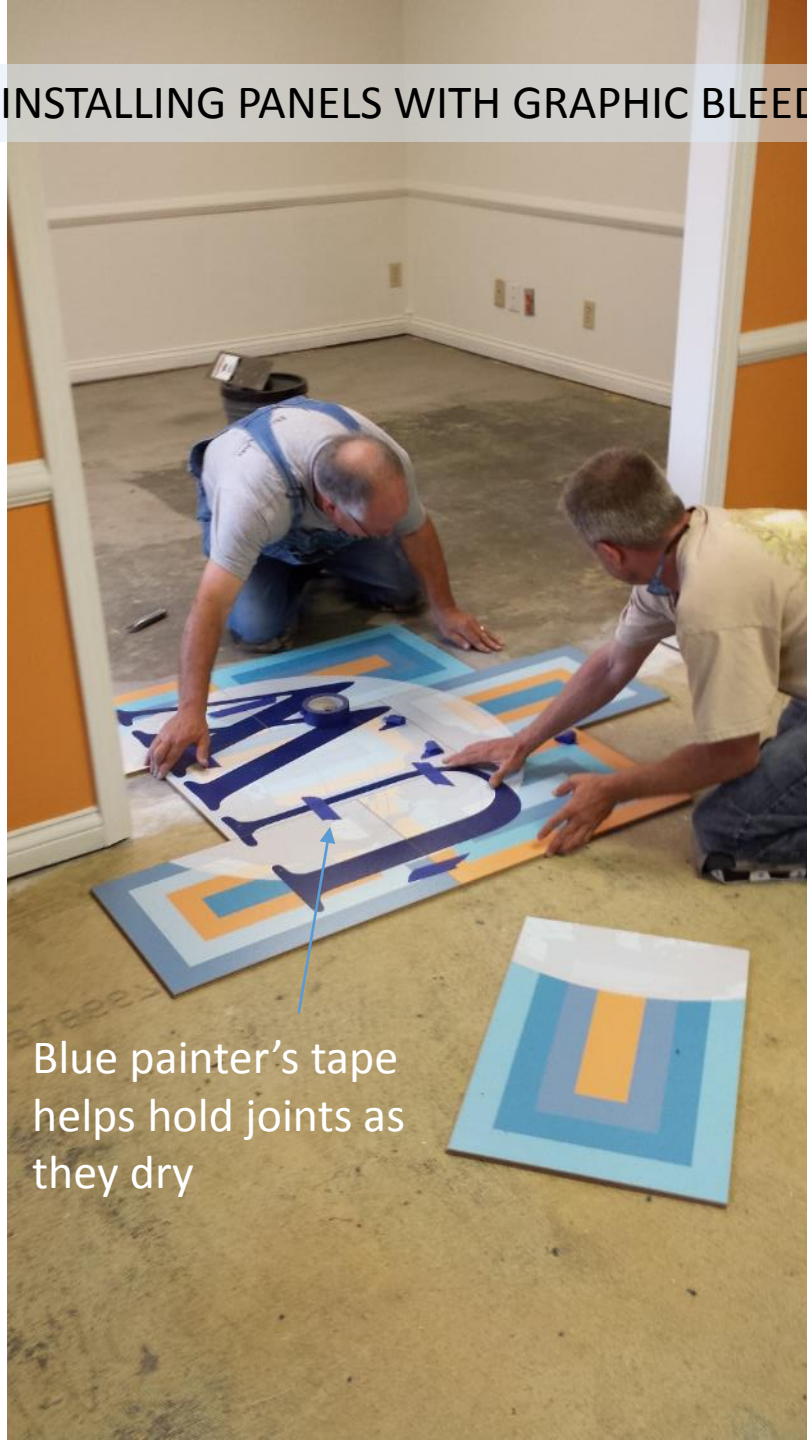
INSTALLING PANELS WITH GRAPHIC BLEED

Frame is cut
with jam saw

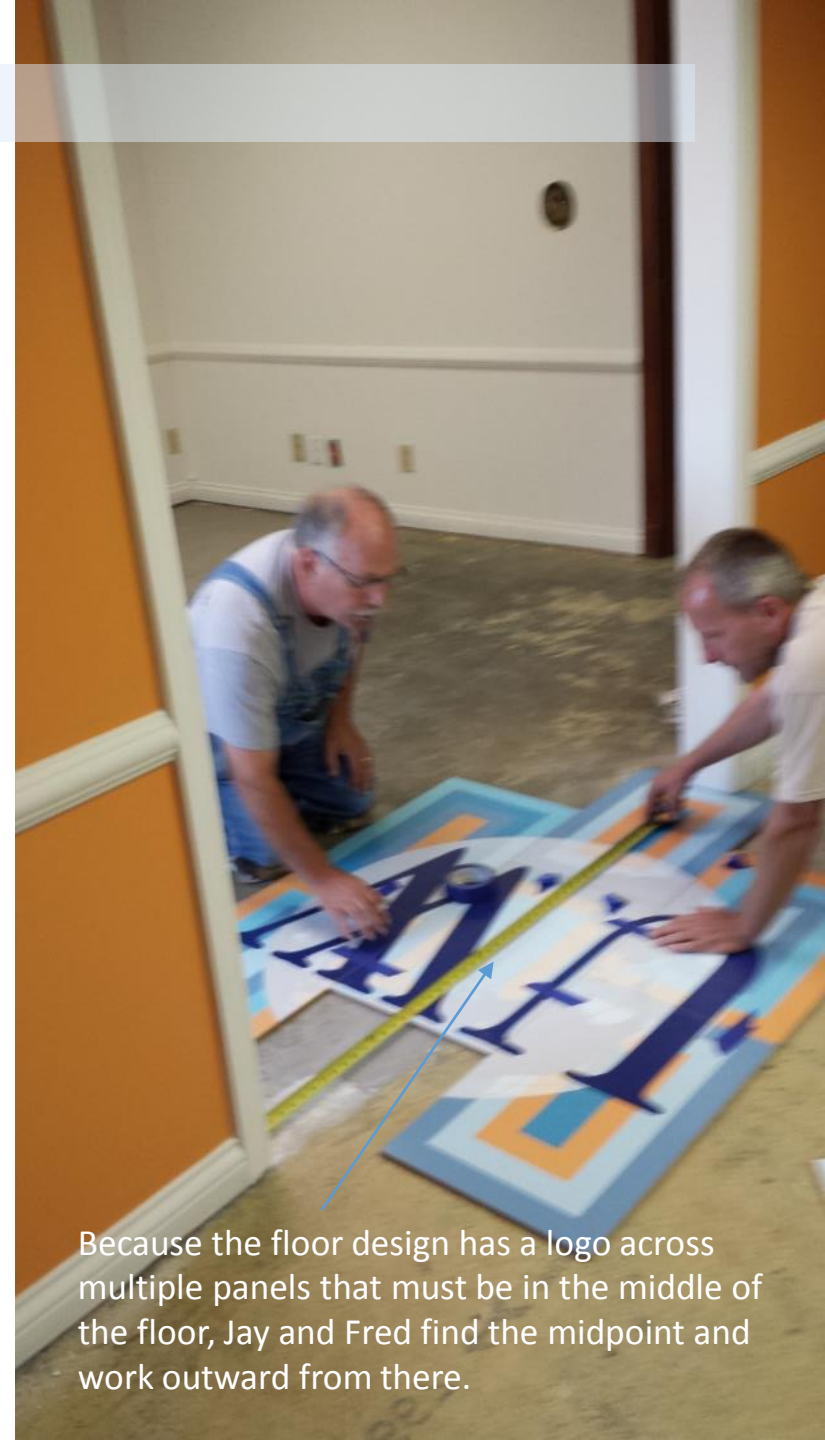


DAY 1: 2:30 PM

Blue painter's tape
helps hold joints
as they dry



Because the floor design has a logo across
multiple panels that must be in the middle of
the floor, Jay and Fred find the midpoint and
work outward from there.



INSTALLING PANELS WITH GRAPHIC BLEED

Installing the tiled pieces:

1. Working from the midpoint, Jay and Fred checked the fit of the central column and cut the pieces accordingly.
2. Then, they installed the end pieces.
3. Last, they slid the middle portion into place.

3:30 PM
END FIRST DAY



FLOATING INSTALLATION

At least 3/8" perimeter gap



Foam underlayment/moisture barrier



Old carpet glue can remain (not as much initial prep needed)

GLUE-DOWN SIDE

Cutting perimeter pieces

FLOATING SIDE

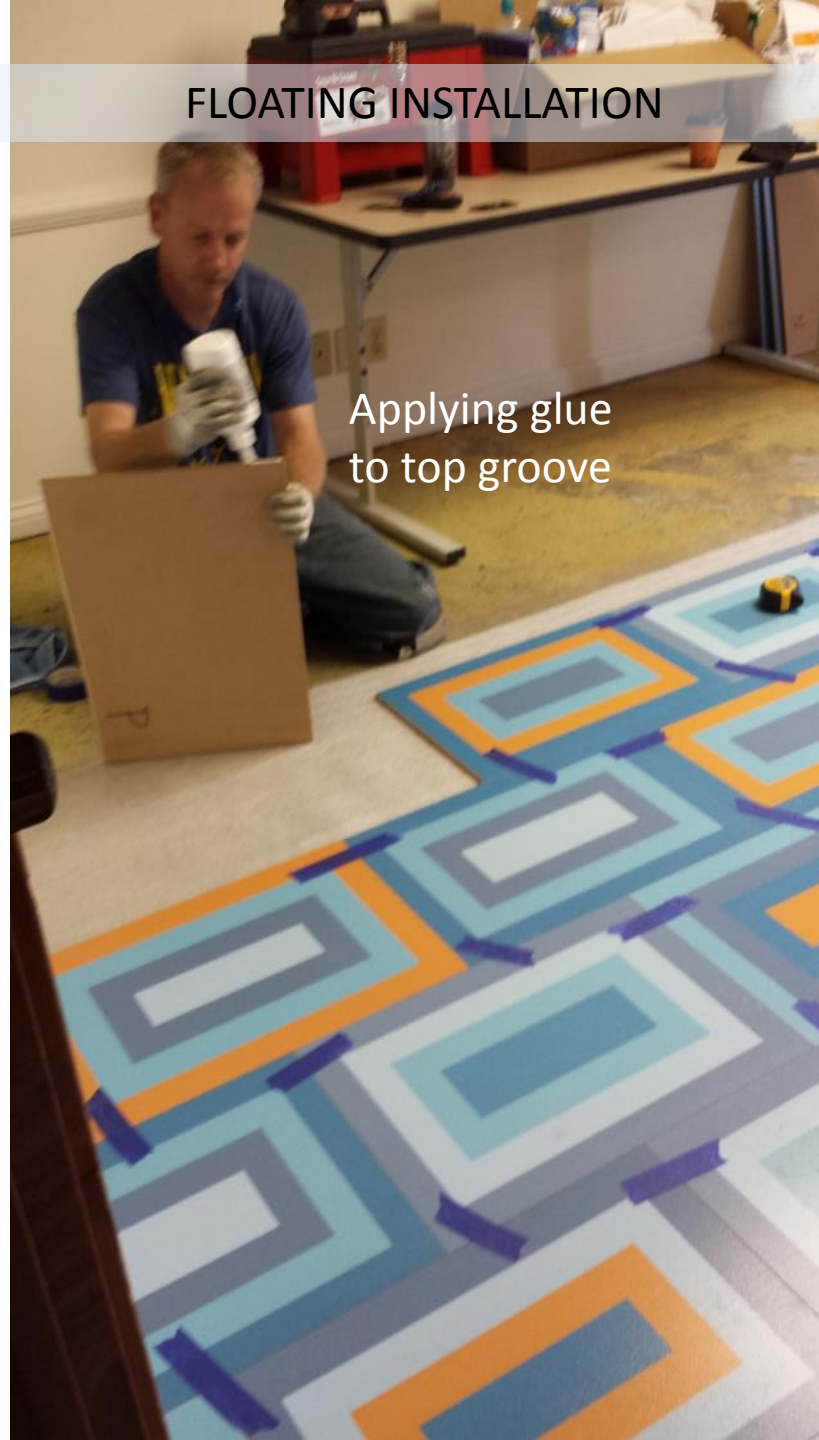
DAY 2: 9:45 AM





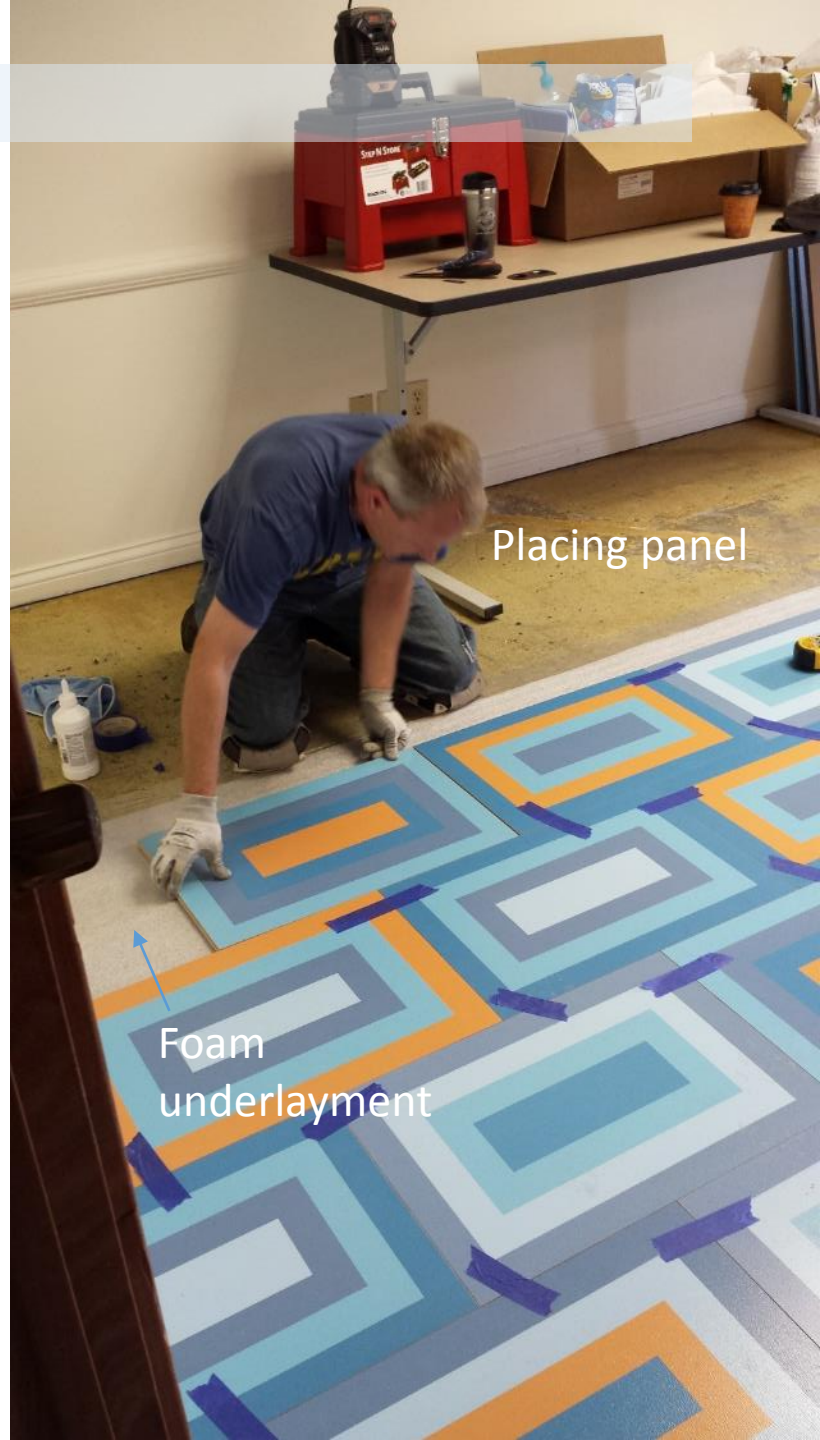
Applying glue
to side groove

DAY 2: 11:45 AM



FLOATING INSTALLATION

Applying glue
to top groove



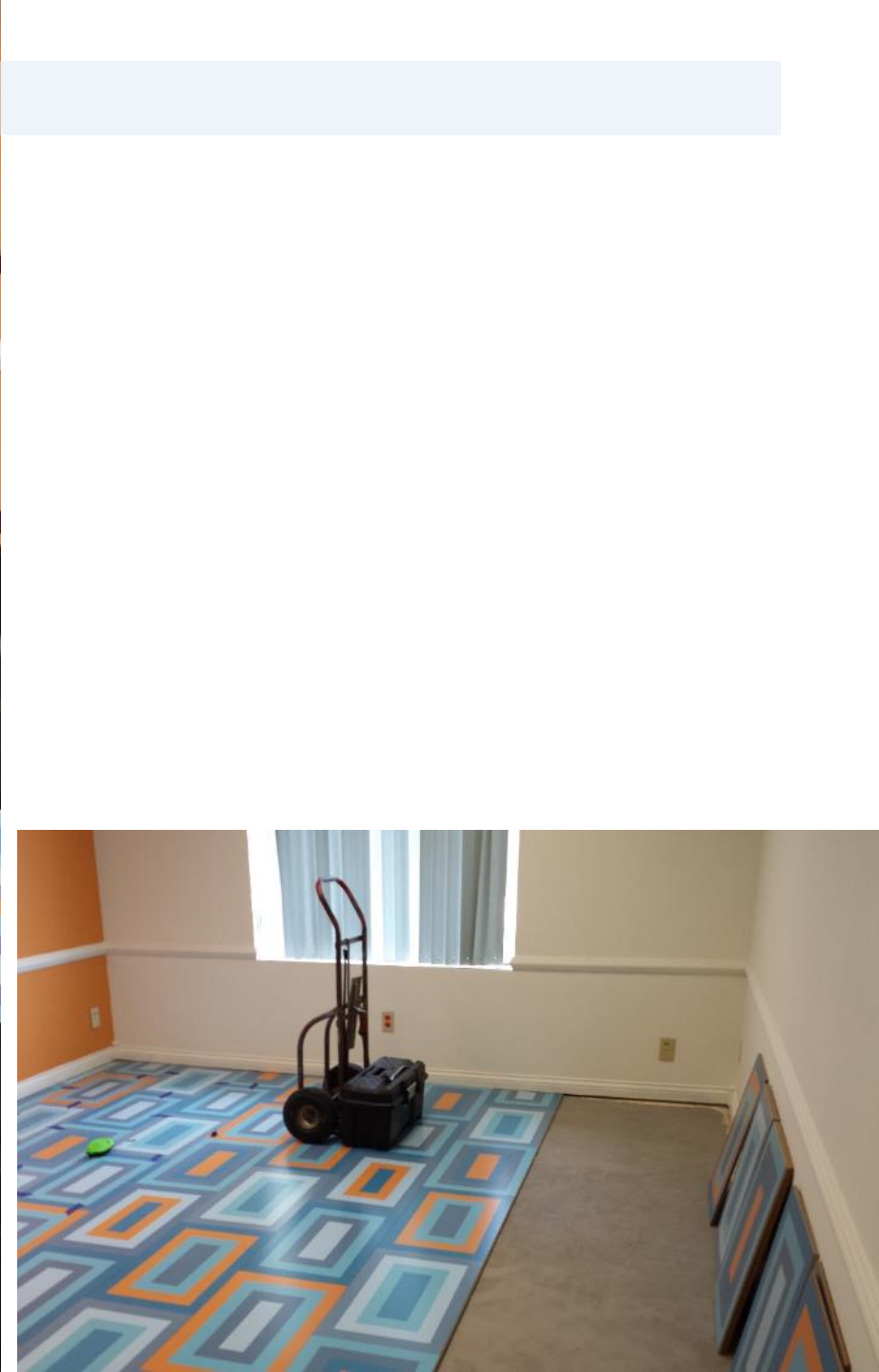
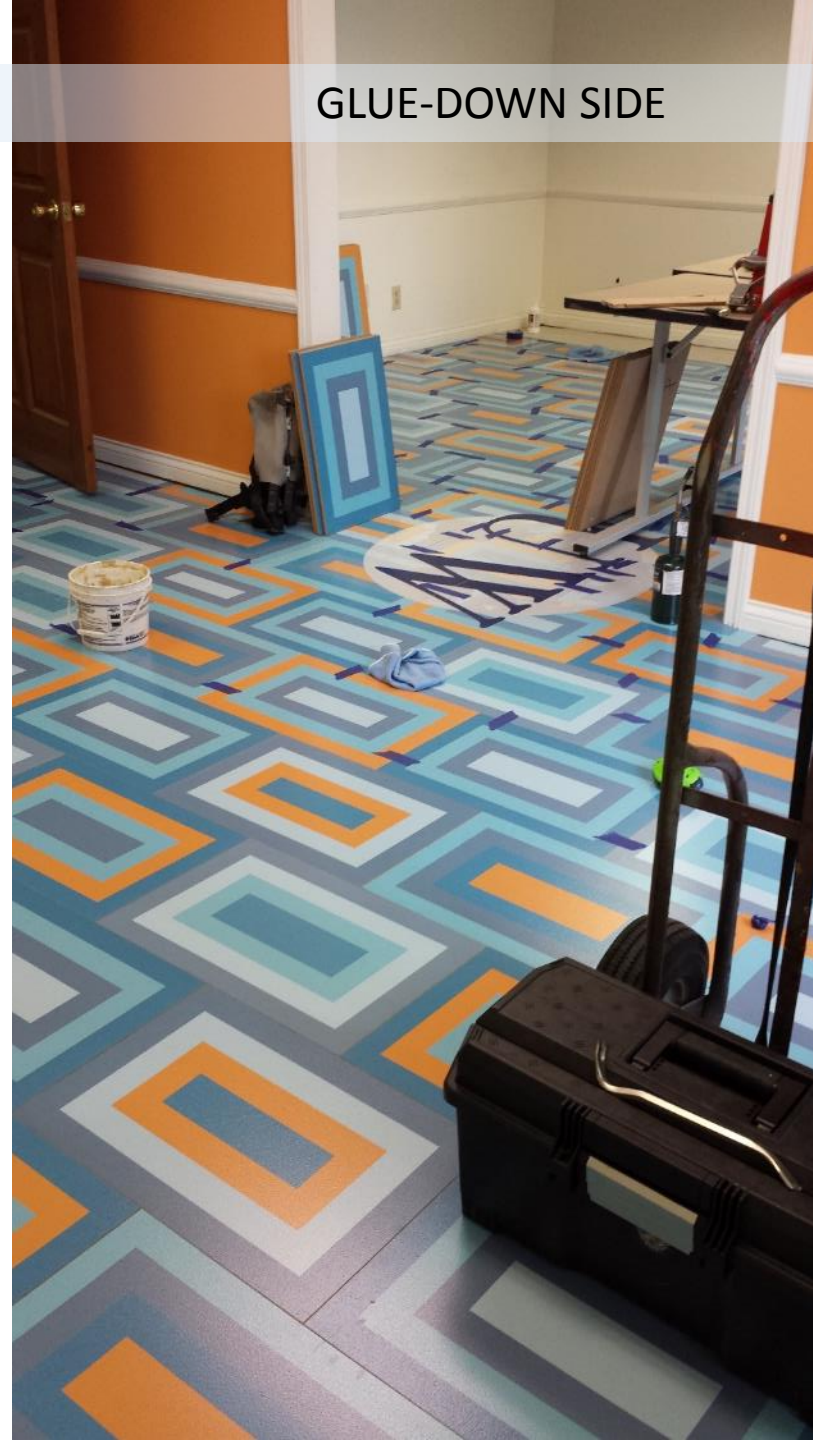
Placing panel

Foam
underlayment



DAY 2: BY LUNCH BREAK (NOONISH)

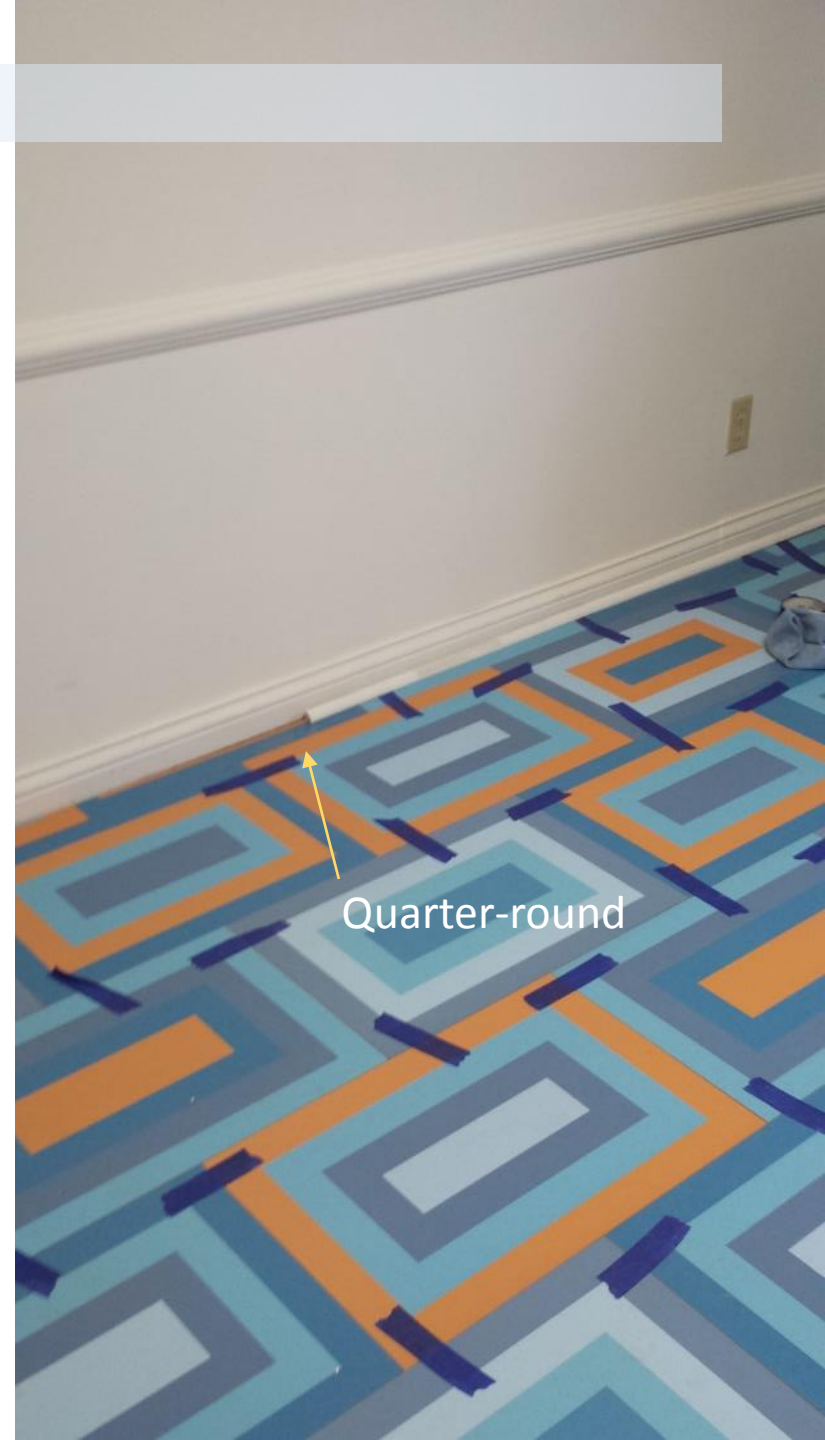
GLUE-DOWN SIDE



FINISHING



DAY 2: 3 PM
ALL PANELS INSTALLED



Quarter-round

INSTALL COMPLETE



TIMELINE OVERVIEW

- Briefing/Design Review and Site Preparation approx. 3 hours
- Measuring and installing center (Graphic Bleed) panels approx. 2-3 hours
- Installing panels (1 installer each 12' x 16' side of room) approx. 5-6 hours
- Finishing and Trimwork approx. 1-2 hours
- Cleanup approx. 1 hour

Total time to install : 12-15 hours (2 installers; 2 workdays)



LW