

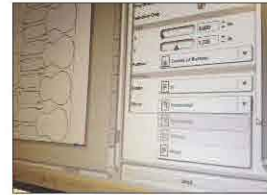
How to Sublimate SubliSparkle



Create a vector based cut file by tracing the outside of the picture/design you want sublimated.



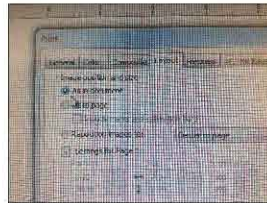
Separate the two files, and group up your vector outlines to get the most out of the heat transfer vinyl.



Test cut the vinyl for best results and reverse the vector design before cutting. After cutting, weed excess vinyl from around your cut design.



Horizontally reverse your sublimation design and lay them out to get the most on the sheet size you're printing.



When printing, select "As in document" in the Image Position and Size options.



Heat press your vinyl for 50% of the recommended time.



Peel the clear carrier off your pressed design.

When the sublimation ink is dry, cut one of the prints out. Cutting near the edges will help in lining the print up to the vinyl already pressed on the shirt.



Turn the sublimation print color side down and line it up with the vinyl.

Taping down the edges helps guard against any shifting while pressing.



Cover with a Teflon sheet and press at 400° for 20-40 for vibrant color.



Remove Teflon sheet, sublimation paper, and all Tape from garment.

Repress design with Teflon cover for 1-2 seconds.

Enjoy your sublimated design!